

Continental Access

A Napco Security Group Company



CardAccess 3000 Workstation Installation V2.9.x

**Note: This document is to be used on a new
workstation installation.**

Revision: Rev A

Date: 09/10/2012

CardAccess® 3000 



DISCLAIMER

Continental Instruments LLC makes no representations or warranties with respect to the contents hereof and specifically disclaim any implied warranties of merchantability or fitness for any particular purpose. Further, Continental Instruments LLC reserves the right to revise this publication and to make changes from time to time in the content hereof without obligation of Continental Instruments LLC to notify any person of such revision or changes.

Copyright © 2012 by Continental Instruments LLC. All rights reserved. No part of this publication may be reproduced, transmitted, transcribed, or stored in a retrieval system, without the prior written permission of Continental Instruments LLC, 355 Bayview Avenue, Amityville, NY 11701. Telephone: 631-842-9400 • FAX: 631-842-9135 • GSA# GS-07F-0039H.

This document contains proprietary information of NAPCO Security Technologies. Unauthorized reproduction of any portion of this manual without the written authorization of NAPCO Security Technologies is prohibited. The information in this manual is for informational purposes only. It is subject to change without notice. Companies, names and data used in examples herein are fictitious unless otherwise noted. NAPCO Security Technologies assumes no responsibility for incorrect information this manual may contain.

A NAPCO SECURITY TECHNOLOGIES COMPANY

Publicly traded on NASDAQ Symbol: NSSC

Visit our websites at

<http://www.cicaccess.com/>

<http://www.napcosecurity.com/>

<http://www.alarmlock.com/>

Table of Contents

Important Information - Must Read Prior To Starting Installation	3
Computer Specifications	4
Scope / CardAccess 3000 Workstation Installation	5
Select to install Badging3000	16
Configuring the Client Connection Utility.....	18
Appendix A – Installing EPI Badging 3000 on a 64 bit computer	26

Important Information - Must be read before installing software.

- 1) This document pertains to a new CardAccess 3000 V2.9.x workstation installation.
- 2) The use of a CardAccess 3000 Workstation requires a valid V2.9.x security key/license on the CardAccess 3000 Server/Host. The security key/software license must support 5 or more workstations. If the security key displays “max workstations =1”, there is no support for a workstation.
- 3) During the installation of a CardAccess 3000 workstation, you will be prompted to type in the IP address of the CardAccess 3000 Server/Host into the client connection utility. Before starting this installation, verify the IP address and name of the CardAccess 3000 host.
- 4) The CardAccess 3000 workstation communicates to the CardAccess 3000 Server/Host via a network using TCP/IP ports. These ports must be opened. On XP and Server 2003, it is recommended to turn off all firewalls in Windows Services. On Windows 7 and Server 2008, you must leave the firewall on, and “Allow” (open) all ports. Refer to the Continental Website for the Firewall configuration documents.
- 5) To assure proper communications from the CardAccess 3000 workstation to the CardAccess 3000 Server, you must be able to ping the CardAccess 3000 Server from the CardAccess 3000 Workstation. You must be able to ping it by IP address and Host name.
- 6) It is recommended to install and execute integration features on a CardAccess 3000 workstation (ex. – EPI Badging 3000, DVR integration, Napco Integration, Wireless Locks...). You **MUST** have FULL ADMINISTRATOR permissions to install and execute integration features.

CA3000 v2.9.x Workstation PC Recommendations

	Workstation-Event Viewing Only	Workstation-Event Viewing + any one Integration feature (Badging, DVR/NVR, Napco, Scripting, or Dynamic Maps)	Workstation-Event Viewing + any two Integration features (Badging, DVR/NVR, Napco, Scripting, or Dynamic Maps)
Processor	Pentium Core2 Duo, 2.2GHz min	Pentium Core2 Duo, 2.6MHz min	Dual Pentium Core2 Duo, Pentium Quad Core or Pentium Xeon
Ram	2 GB Min	3 GB + Min	3 GB +
Hard Drive	80 GB min	160 GB min	250 GB min
USB Ports	2	4	4
Serial Ports	N/A	N/A	N/A
Parallel Ports	1	1	1
Mouse	PS2 or USB	PS2 or USB	PS2 or USB
Monitor	17" (1024 x 768) min	17" (1024 x 768) min	17" (1024 x 768) min
DVDROM	48x/16x	48x/16x	48x/16x
DVDR	24x/4x Optional	24x/4x Optional	24x/4x Optional
Sound	Recommended	Recommended	Recommended
Network Card	100 NIC Ethernet minimum	100/1000 NIC Ethernet	100/1000 NIC Ethernet
Operating System	Win XP Pro w/SP3, Win 7 Pro w/ SP1 32/64 bit, Win 2003 Server R2 w/SP2 32/64 bit or Win 2008 Server R2 w/SP2	Win XP Pro w/SP3, Win 7 Pro w/ SP1 32/64 bit, Win 2003 Server R2 w/SP2 32/64 bit or Win 2008 Server R2 w/SP2	Win XP Pro w/SP3, Win 7 Pro w/ SP1 32/64 bit, Win 2003 Server R2 w/SP2 32/64 bit or Win 2008 Server R2 w/SP2
Database	N/A	N/A	N/A
Backup	N/A	N/A	N/A
Notes:	*** Salient Analog Capture cards are not supported on 64 bit operating systems.	For large corporations, hospitals or colleges, a frame video capture card and high-end digital camera is recommended on a badging station. Depending on the amount of photo's needed to be taken per-day on a Badging station; or for other functions the number of DVRs/NVRs or Napco Panels Integrated; or the number of Scripts or Dynamic Maps running additional RAM may be required.	

Scope

This document contains information regarding the installation of a new CardAccess 3000 V2.9.x Workstation. Prior to the installation, you must verify the computer meets the specifications. This document also covers the installation of the EPI Builder Badging 3000 software. If you choose not to install the Badging 3000 software, do not select to install Badging 3000 and disregard all screens referencing the Badging 3000 installation. **If you are installing the EPI Badging 3000 on a 64 bit computer, you must follow the steps in Appendix A after the Badging 3000 is installed.**

VERY IMPORTANT: The screenshots in this document were captured during a new CardAccess 3000 workstation installation on a **Windows 7 – 64 bit computer**. The following screenshots will vary if the installation is being performed on a 32 bit computer or another supported operating system.

CardAccess 3000 Workstation Installation

If auto start is enabled on your system, the **Auto Play** screen will display after inserting the CA3000 DVD in the DVD drive (Refer to Figure 1). Click **“Run Launch.exe”**. Verify the **CardAccess 3000 Version 2.9 Setup** screen displays (refer to figure 3). Skip ahead to the steps following Figure 3.

Warning: If auto start is not enabled on your system, nothing will occur after inserting the CA3000 DVD. Follow the steps below to execute the program.

Click the **Start** menu on your PC. In the **Search Programs and Files** or the **Start/Run** box, type **d:\launch.exe** (Refer to Figure 2). After pressing ENTER, the **CardAccess3000 Version 2.9 setup** screen will display (Refer to Figure 3).

Note: “d:” represents the DVD drive letter. This letter will be different depending on the drive letter of your DVD .



Figure 1.



Figure 2.



Figure 3.

Click on the **Install CardAccess 3000** button. The CardAccess 3000 Prerequisites will be installed if they are not currently on the computer.

Pre-requisites

NOTES:

- There can be up to seven prerequisites required to be installed. Older supported operating systems will require more prerequisites to be installed (refer to figure 4).
- During the installation of the prerequisites, the computer might require a reboot. If you are prompted to reboot, click Yes or OK (refer to figure 6). After the computer reboots, the CardAccess 3000 setup program might need to be restarted manually (refer to figures 1, 2 and 3).

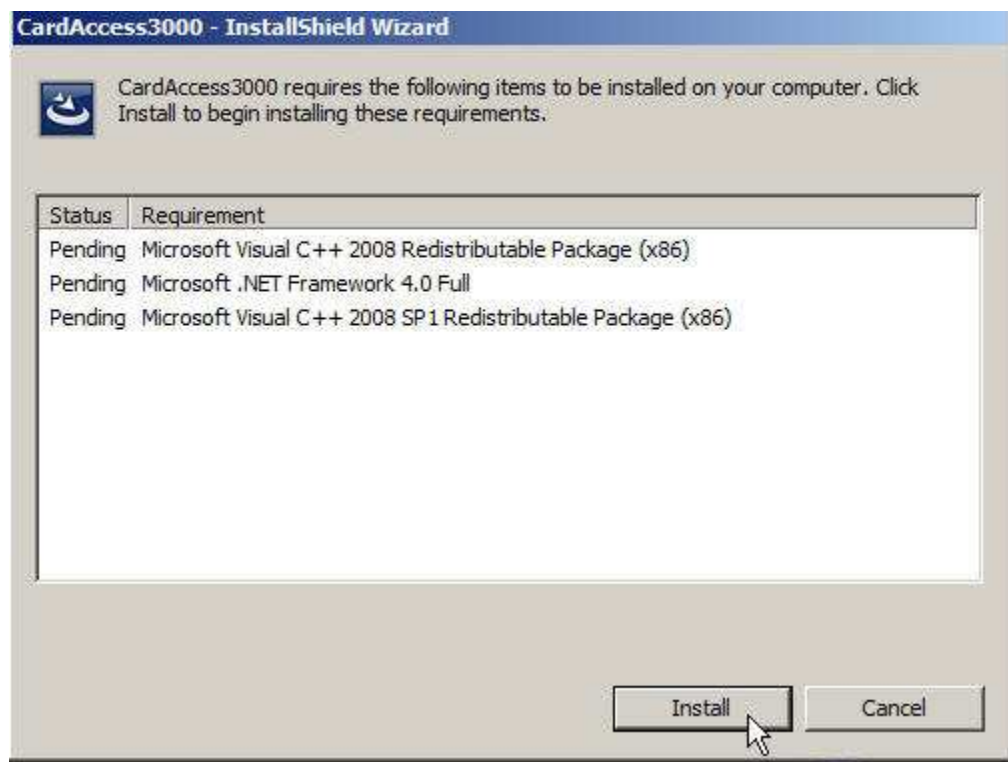


Figure 4.

Click **Install**. After clicking **Install**, a progress bar will display while the prerequisites are installing (Refer to figure 5).

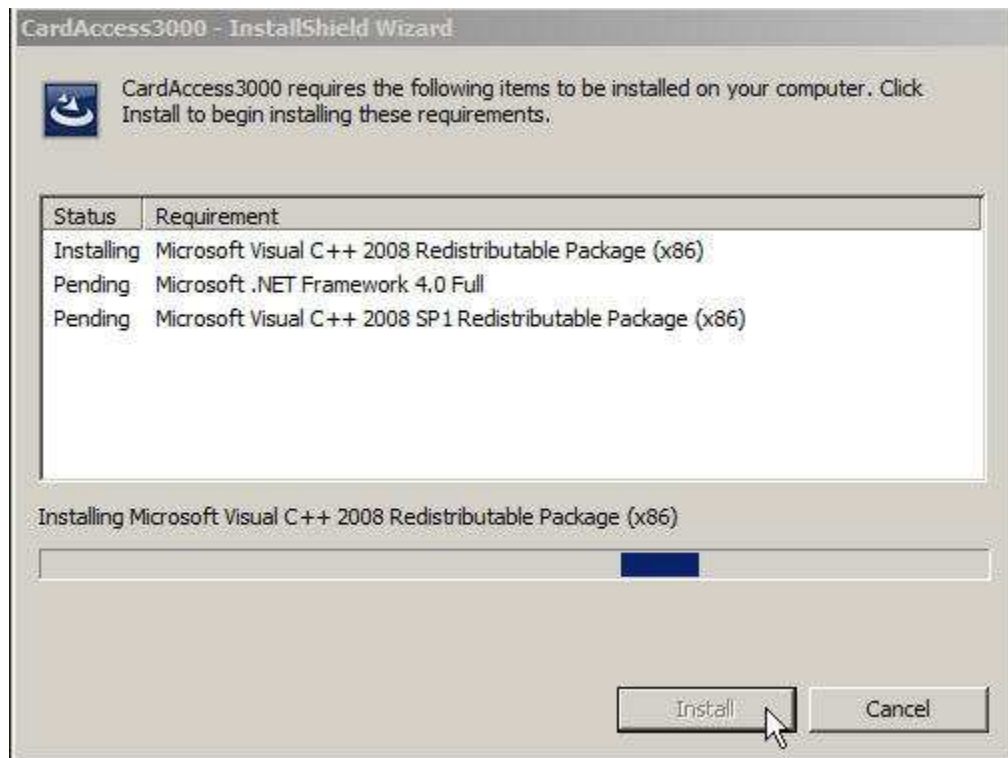


Figure 5.

Reminder: During the installation of the prerequisites, the computer might require a reboot. If you are prompted for a restart, click **OK**.

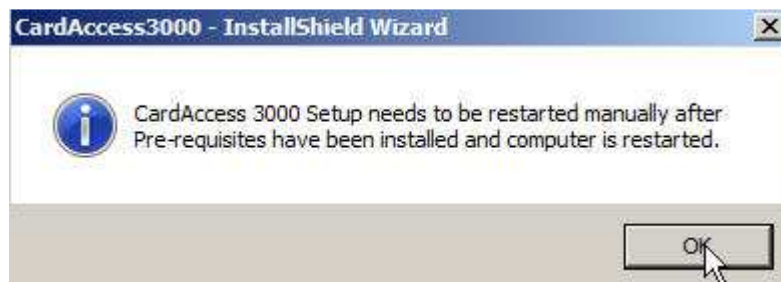


Figure 6.

After the installation of the prerequisites, the **ADH Source Filter for DirectShow** installation will begin (refer to figure 7).

Reminder: If the ADH Source Filter for DirectShow is already installed on the computer, this process will be skipped.

ADH Source Filter for DirectShow (Pre-requisite)



Figure 7.

Note: As part of the **ADH Source Filter for DirectShow** installation, the VC++ Run Time libraries will be installed if needed (refer to figure 8).



Figure 8.

Click **Install**. A progress bar will display while the **Microsoft Visual C++ Redistributable Libraries for DirectShow** are installing (refer to figure 9).

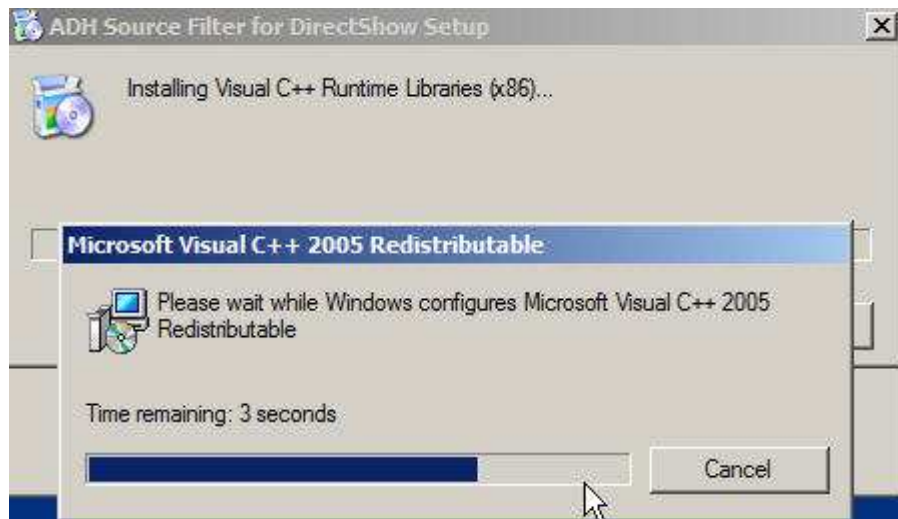


Figure 9.

After the completion of the Visual C++ libraries installation, the **ADH Source Filter for DirectShow Setup Wizard** will install (Refer to figure 10).

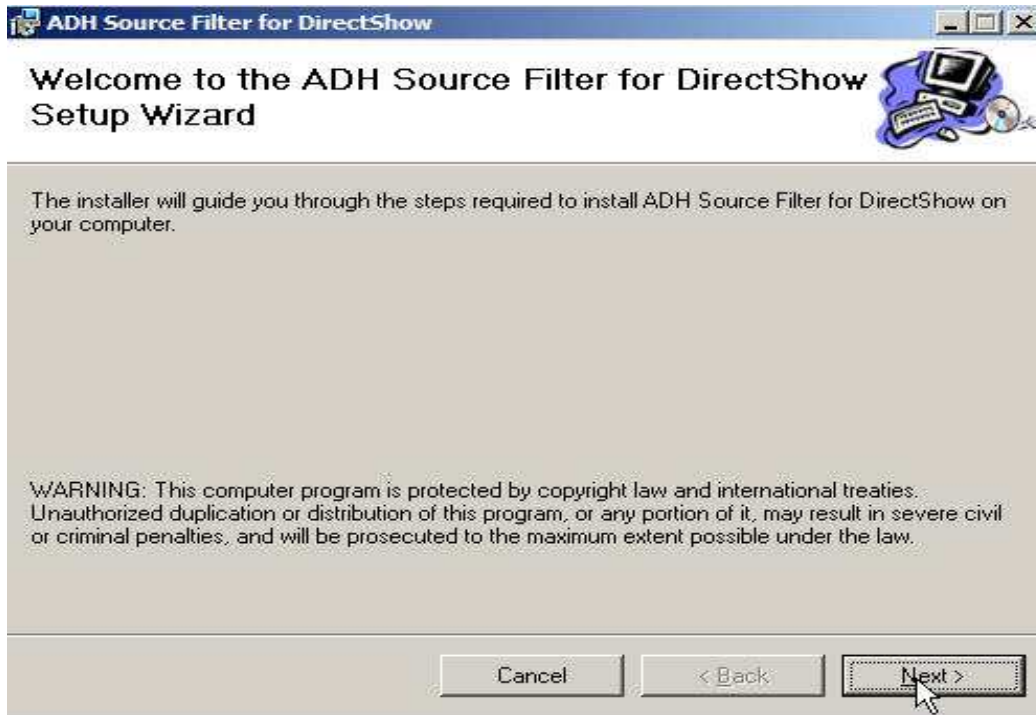


Figure 10.

Click **Next**. The **Select Installation Folder** for DirectShow screen will display (Refer to figure 11).

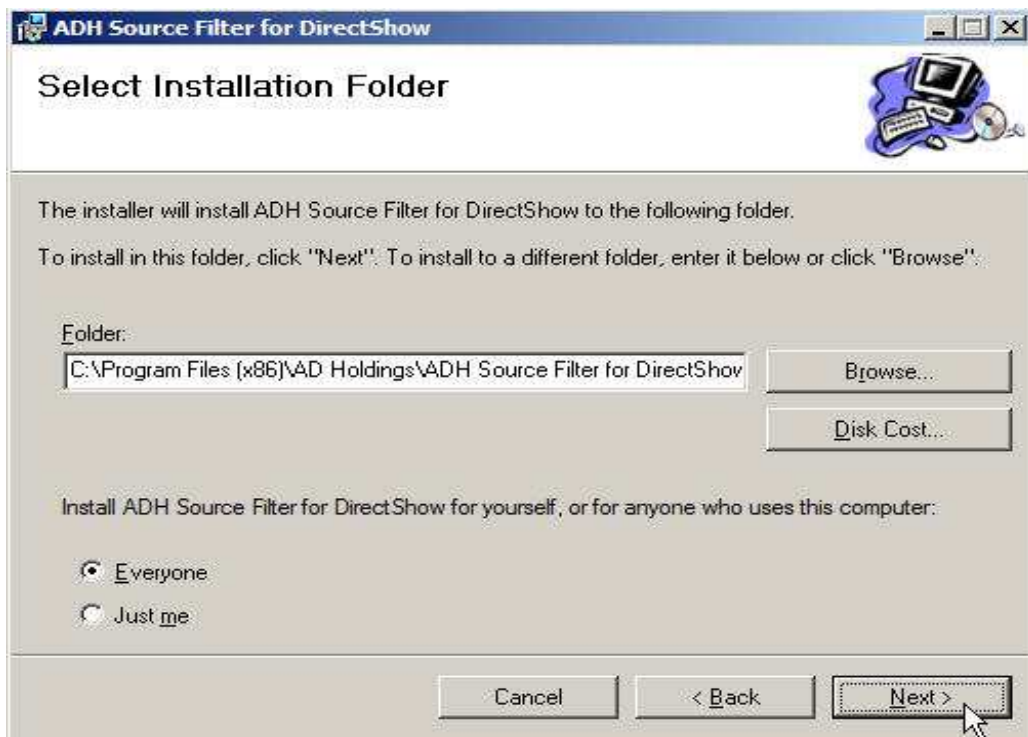


Figure 11.

Click **Next**. The **Confirm Installation** screen will display (Refer to figure 12).

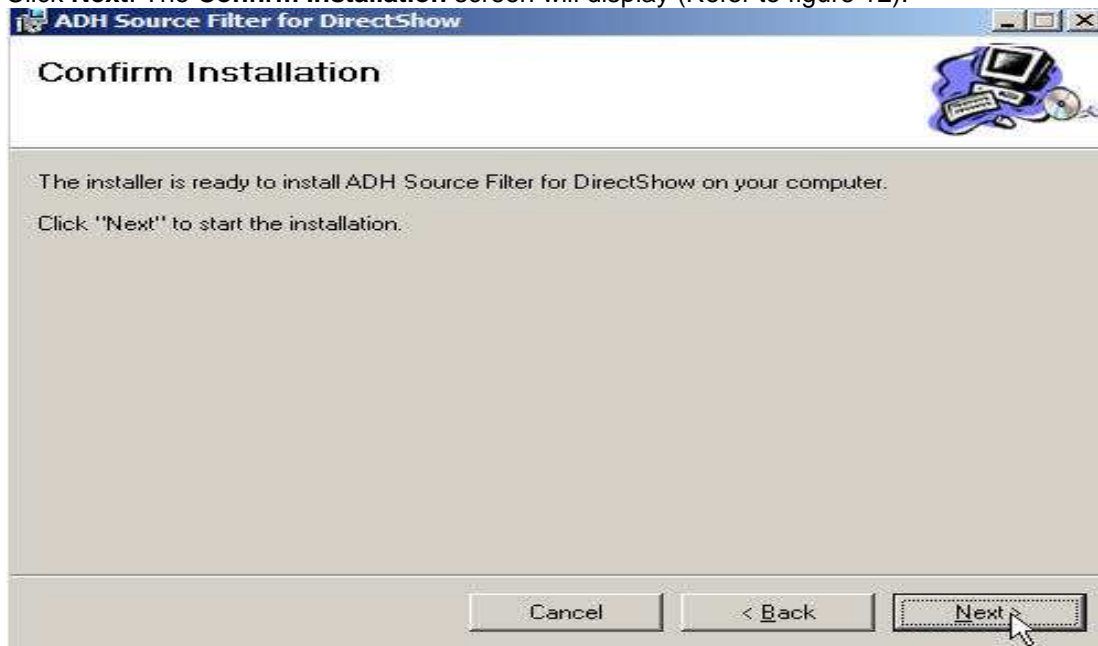


Figure 12.

Click **Next**. A progress bar will display while the **ADH Source Filter for DirectShow** installs (Refer to figure 13).

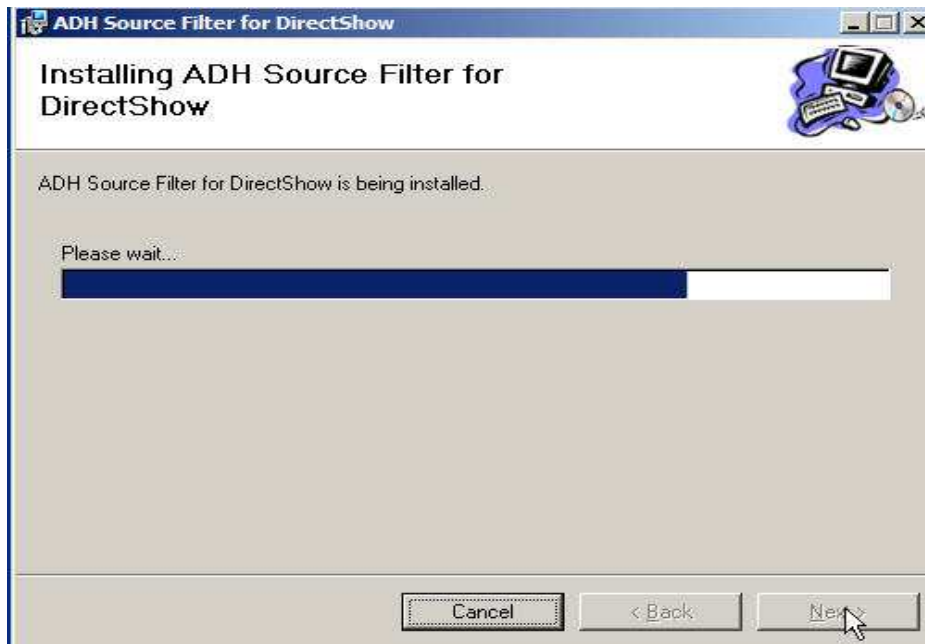


Figure 13.

At the completion of the **ADH Source Filter for DirectShow** installation, the Installation Complete screen displays (Refer to figure 14).



Figure 14.

Click **Close**. The **Welcome to the CardAccess 3000 Setup Program** screen displays (Refer to figure 15).

CardAccess 3000 InstallShield wizard

The CardAccess 3000 **InstallShield Wizard** screen will display for a short period while CardAccess 3000 is preparing to install.

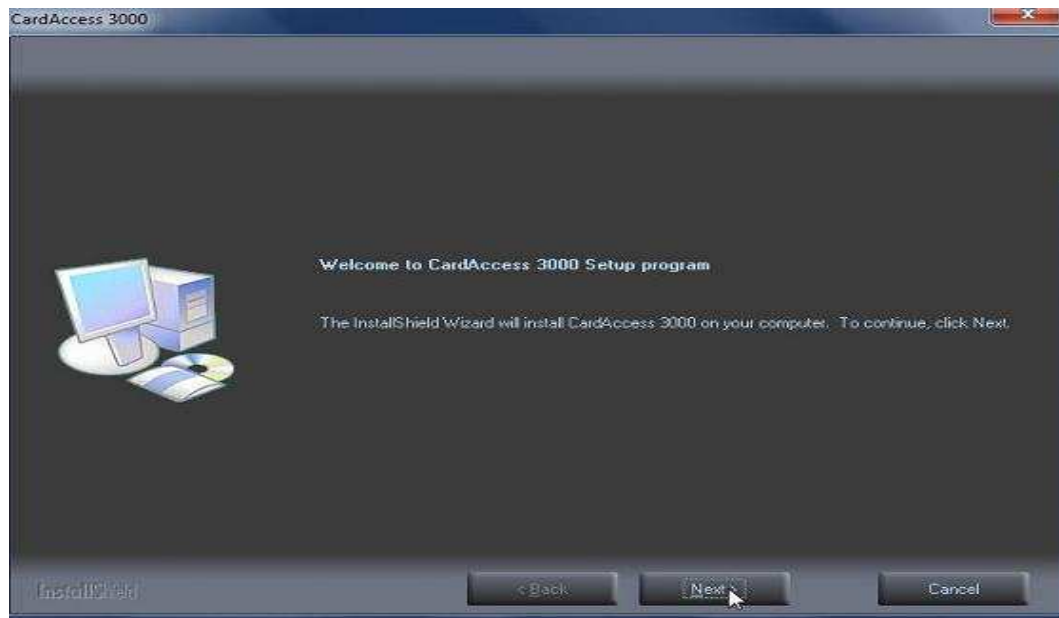


Figure 15.

Click **Next**. The **Select CardAccess Server Type** screen will display (Refer to Figure 16).

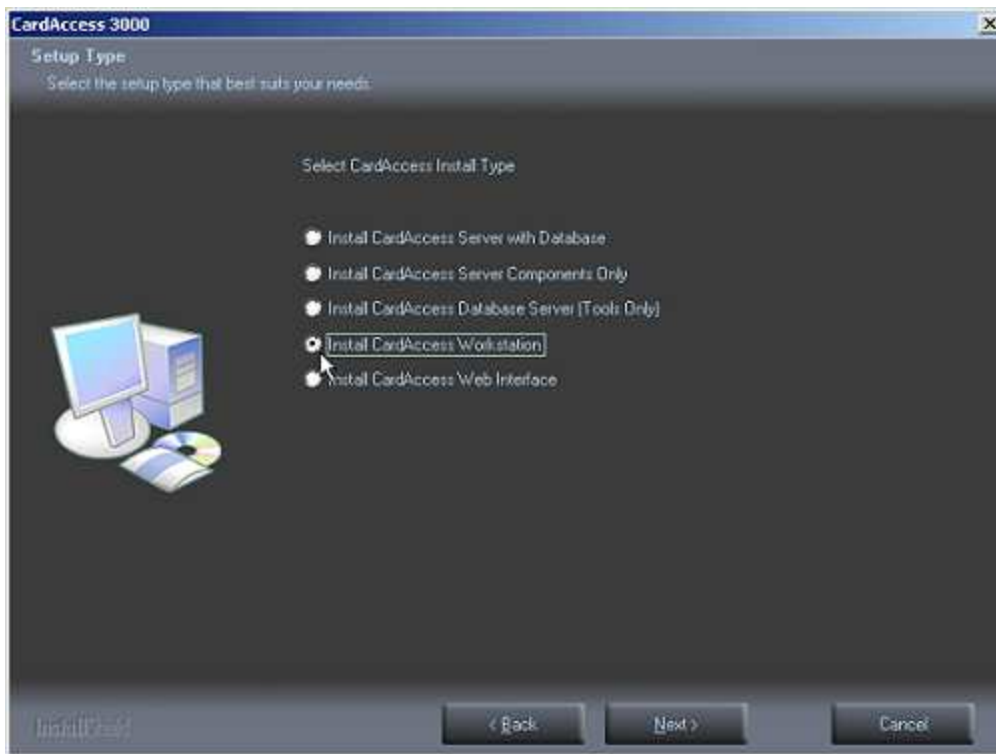


Figure 16.
Select the **Install CardAccess Workstation** option. Click **Next**. The **Select CardAccess Destination Folder** screen will display (Refer to Figure 17).

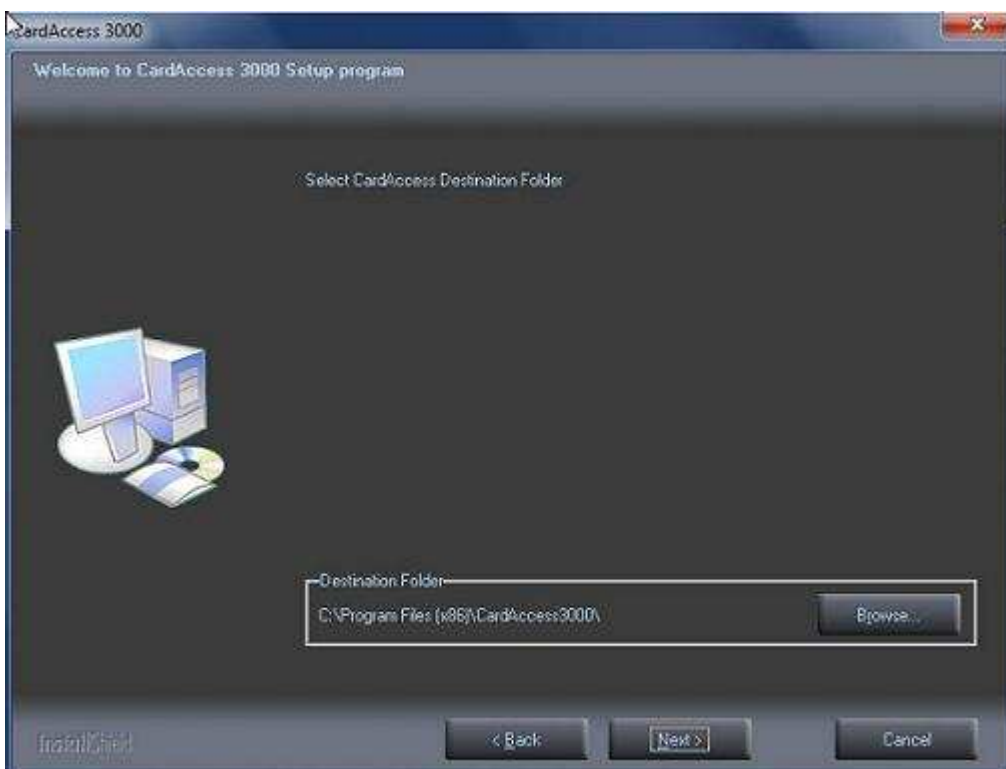


Figure17.

The default **Destination Path** will display. If you are installing CardAccess 3000 to a different path, click the **Browse** button and select the path.

NOTE: CardAccess 3000 must be installed under a Program Files folder. It is highly recommended to use the default path. As previously mentioned, the Program Files path on a **64 bit computer** will be **\Program Files(x86)**.

Click **Next**. The **Select Additional CardAccess components** screen will display (Refer to Figure 18).

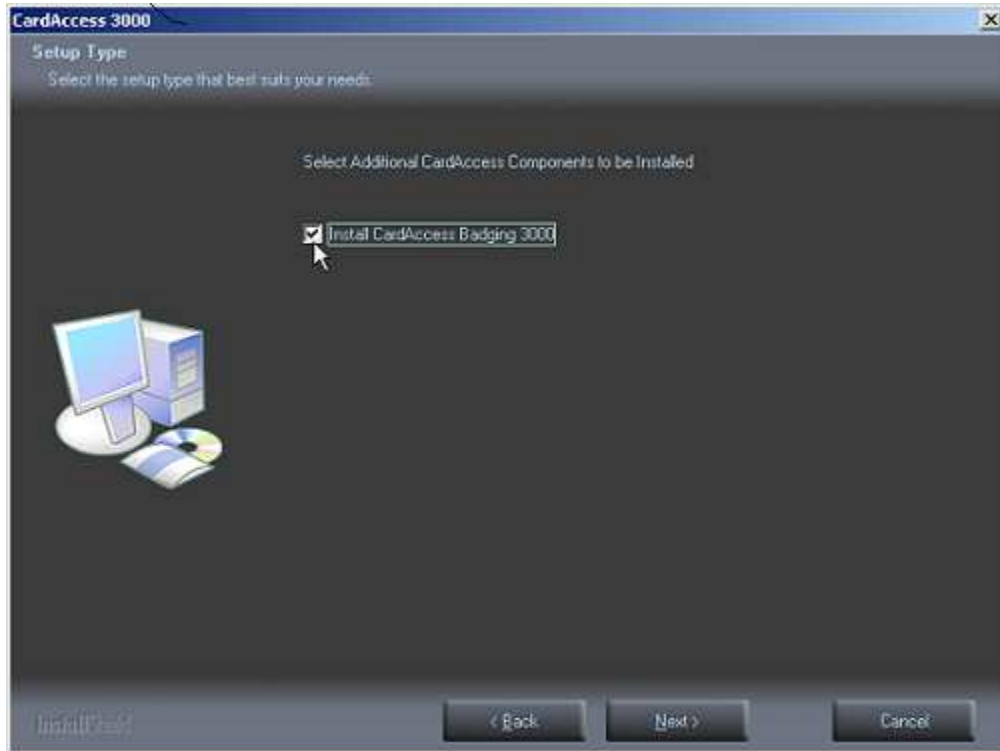


Figure 18.

If the EPI Badging 3000 licenses (Runtime and Designer) have been purchased, select the **Install CardAccess Badging 3000** checkmark.

Note: The EPI software installation will occur after the computer reboots, at the end of the installation. If you are installing the Badging 3000 (EPI) on a 64 bit computer, after the installation is complete, you **MUST** follow the steps in **Appendix A**.

Click **Next**. The **Current Settings** screen will display (Refer to Figure 19).

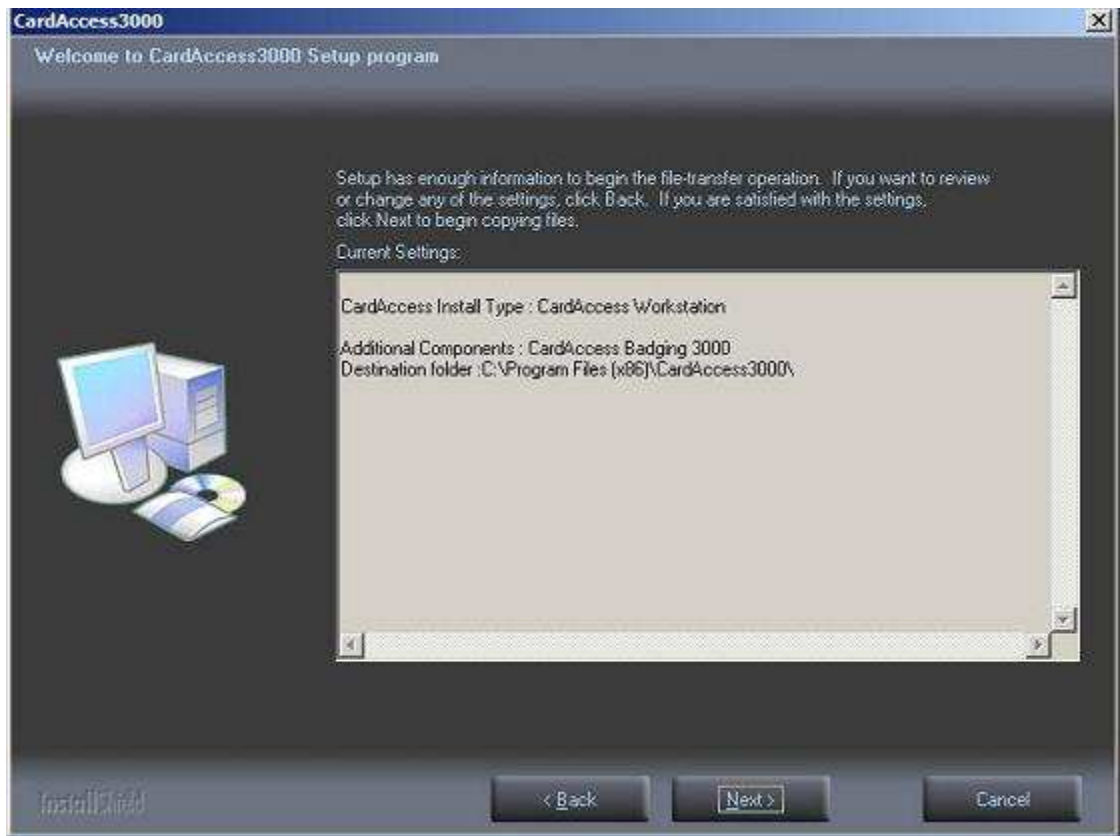


Figure 19.

After reviewing the **Current Settings**, click **Next**. A progress bar will display while CardAccess 3000 is installing (Refer to Figure 20).

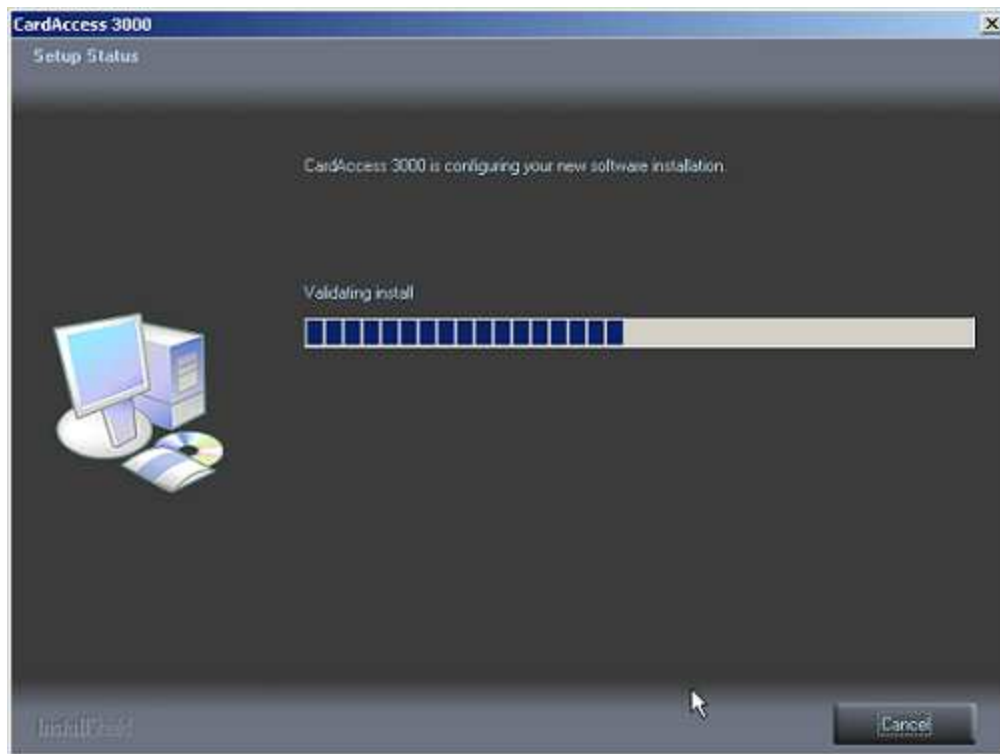


Figure 20.

After the completion of the CardAccess 3000 installation, the **Client Connection** utility screen will display (Refer to figure 21).

Configure the **Client Connection Utility** as follows:

WARNING: If the following settings are not configured properly, the CardAccess 3000 workstation will fail to launch:

- **Server IP Address** – This is the IP address of the CardAccess 3000 Server/Host
- **Server Port** number = Port 9000 Note: This can't be changed.
- **Host/Workstation** = Select the Workstation #.

Refer to figure 21 for the above configurations.



Figure 21.

Click **Save Settings**. The **Settings save Successfully** screen will display (Refer to figure 22).



Figure 22.

Click **OK** and click **Exit** to close.



Figure 23.

If you selected to install the Badging 3000 software, you will be prompted with the message “**Would you like to Install Badging 3000?**” Click **Yes** if you would like to install the Badging 3000.



Figure 27.

A message will display **Badging 3000 will be installed after your computer reboots, Please leave CardAccess CD in the CD tray.** Click **OK** (refer to figure 27).

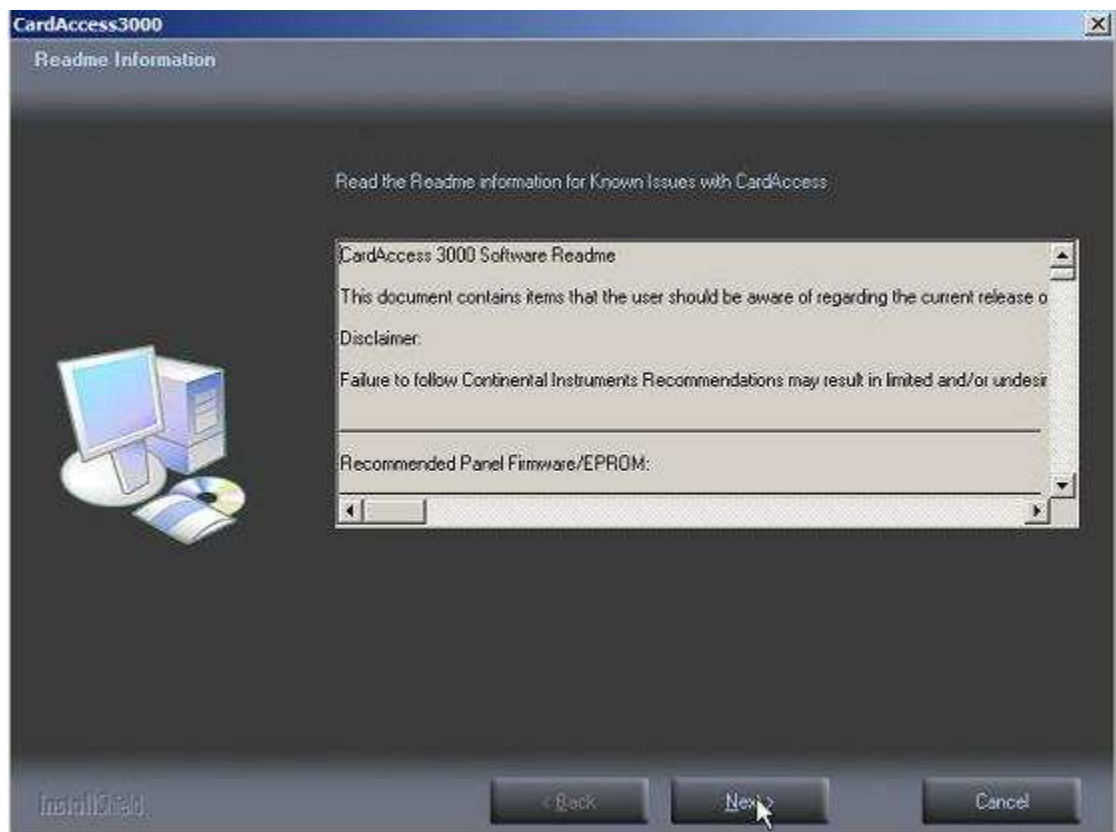


Figure 28.

After reviewing the CardAccess 3000 Software Readme, click **Next**. The **InstallShield Wizard Complete** screen will display (Refer to Figure 29).



Figure 29.

Select the **Yes, I want to restart my computer now** option is selected. This should be selected by default.

Click **Finish**. The computer will restart.

If you did not select to install the Badging 3000, the installation is complete after the computer reboots. If you are installing Badging 3000, the **Welcome to the InstallShield Wizard for EPI Builder Run-Time 6** screen will display after you log back into Windows (Refer to Figure 30).

VERY IMPORTANT: If the Badging 3000 software is being installed on a 64 bit computer, you **MUST** perform the steps in **Appendix A** after the Badging 3000 installation is complete.



Figure 30.

Click **Next**. The **License Agreement** screen will display (Refer to Figure 31).



Figure 31.

After reviewing the license agreement, select **I accept the terms in the license agreement**. Click **Next**. The **Customer Information** screen will display (Refer to Figure 32).



Figure 32.

Enter the User Name and Organization. Click **Next**. The **Setup Type** screen will display (Refer to Figure 33).

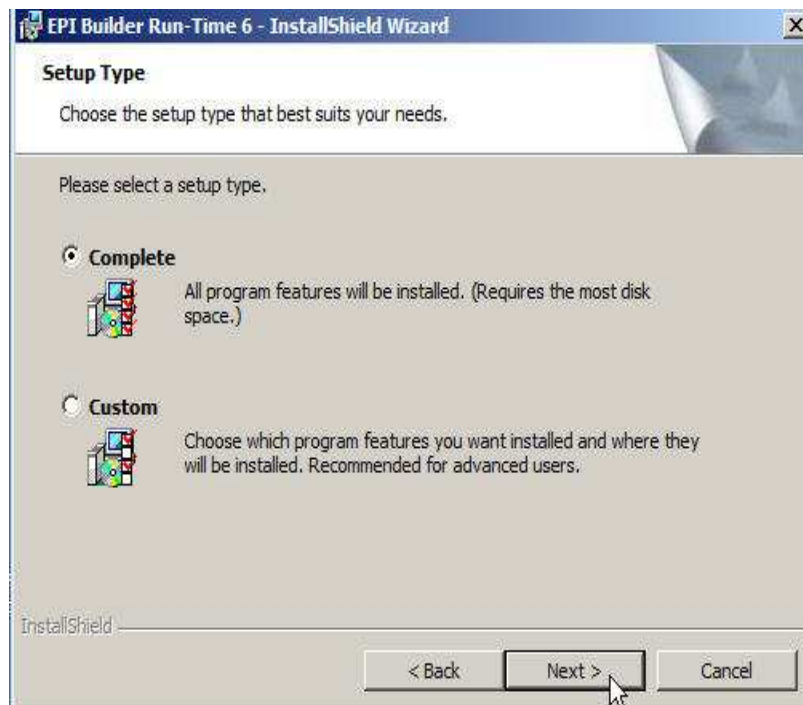


Figure 33.

Select **Complete** and click **Next**. The **Ready to Install Program** screen will display (Refer to Figure 34).



Figure 34.

Click **Install**. The **Installing EPI Builder Runtime 6** screen will display (Refer to Figure 35).

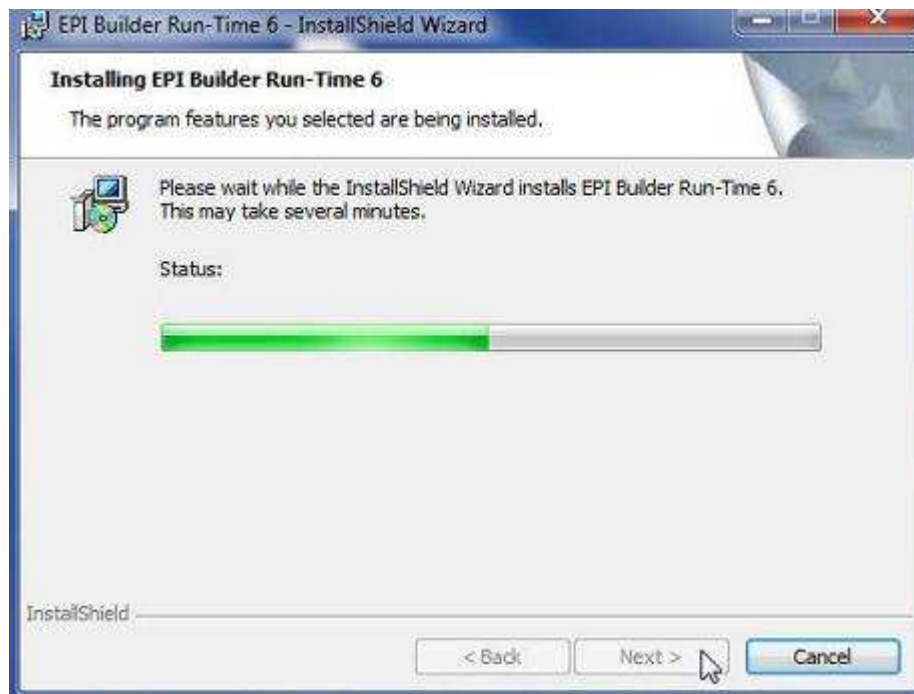


Figure 35.

After the completion of the EPI Builder Runtime 6, the **InstallShield Wizard Completed** screen will display (Refer to Figure 36).

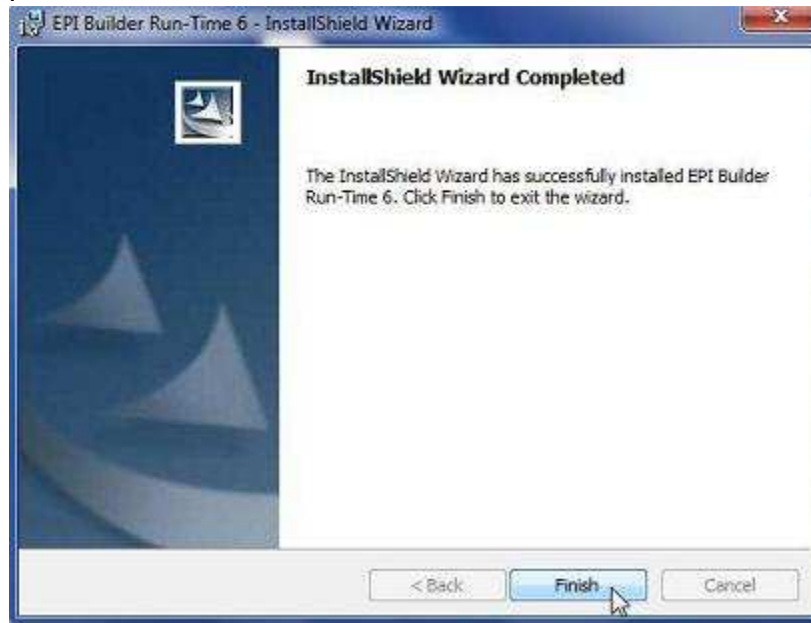


Figure 36.

Click **Finish**. The **CardAccess Workstation** installation is now complete.

Appendix A

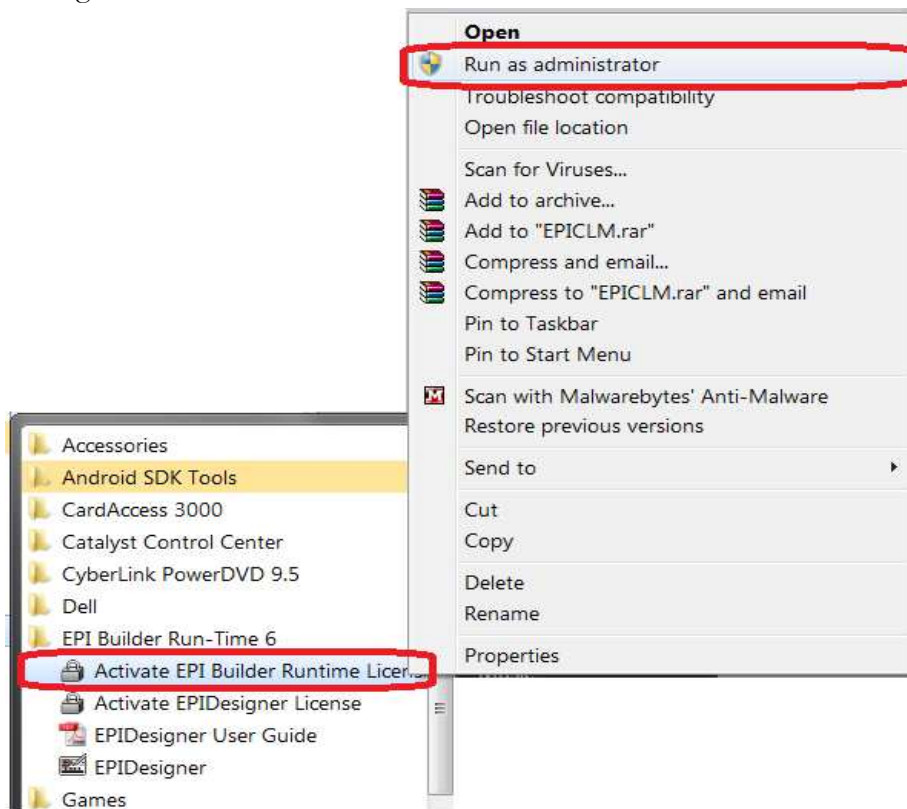
CardAccess 3000 EPIBuilder Badging software installation guide for 64 bit Windows Operating system

Scope:

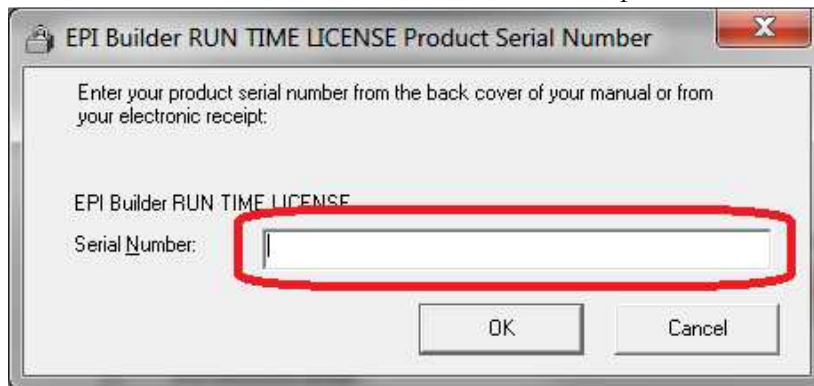
This document describes the steps involved in configuring EPIBuilder Badging software to work on 64 bit Windows operating system. Generally any 32 bit software application should work on 64 bit Operating system unless there are problems with device drivers, etc. However, since 64 bit operating system uses different folder structure, user privileges etc. In some cases it is required to have specific settings for 32 bit user applications to work on 64 bit OS. The steps below guide you through the configuration of EPIBuilder Badging application on 64 bit Windows Operating system.

Steps:

1. **Install Badging Software:** Install the CardAccess3000 software with EPIBuilder check box checked during installation. Installation should be performed with **Local administrator** privileges.
2. **Activate EPIBuilder software licenses:** There are two licenses named as “EPIBuilder Run Time” and “EPIBuilder Designer”. These two licenses should be activated.
 - a. To activate EPI Builder Run-Time license, Go to *Start->All Programs->EPI Builder Run-Time 6* and right click on “*Activate EPIBuilder Runtime License*” and click “**Run as Administrator**”.

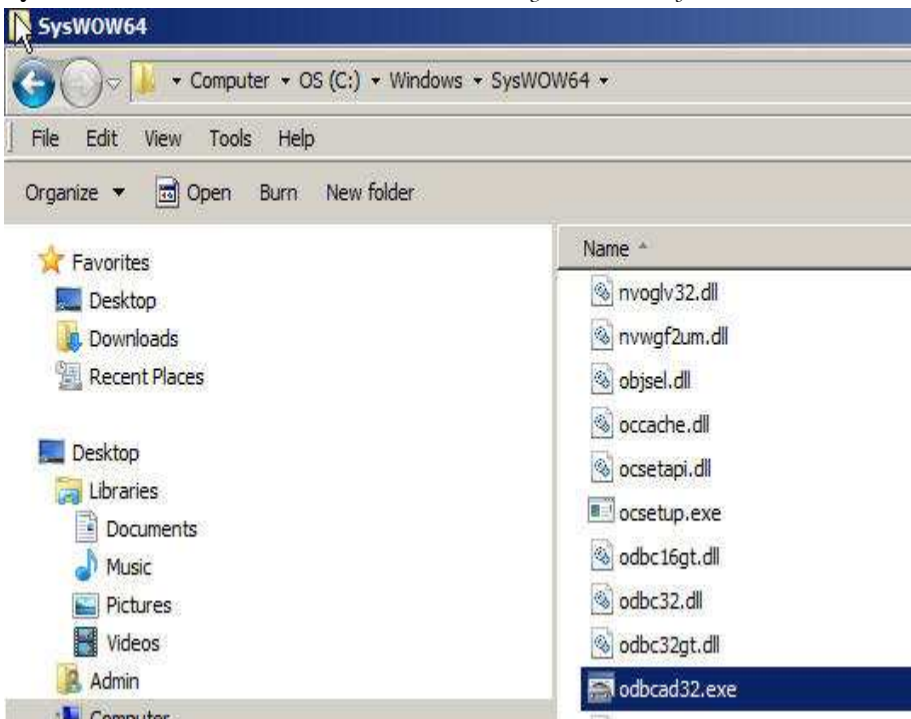


- b. In the activation window enter the serial number provided and click ok.

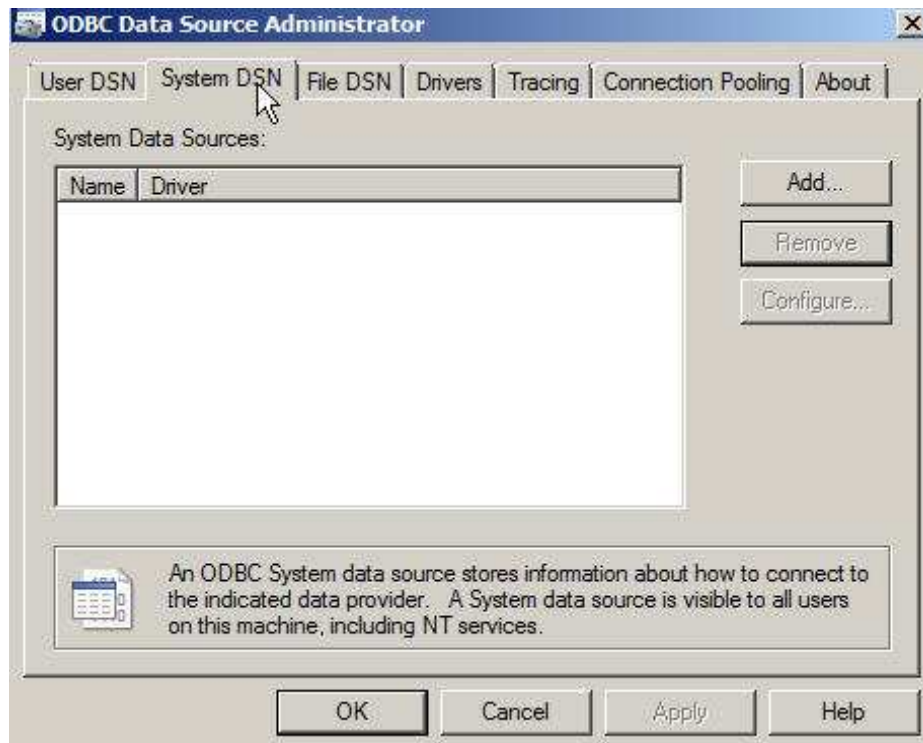


NOTE: It is important to Run as administrator to activate the license on 64 bit operating system. Also, it is recommended to perform phone activation since internet activation might fail if firewall blocks access to activation server.

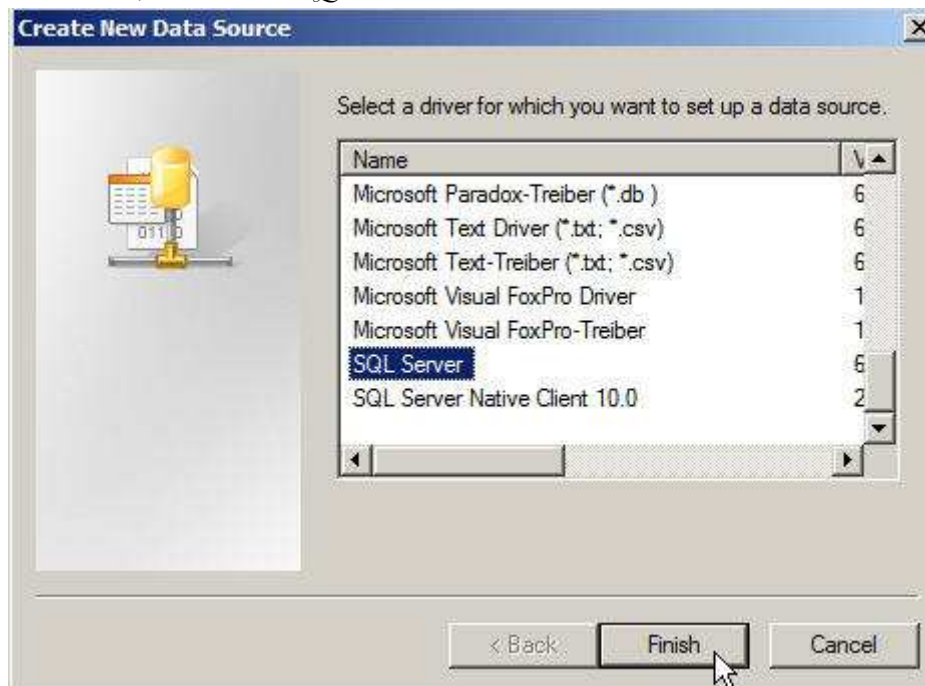
- c. Repeat the same for EPIBuilder Designer license.
3. **Create ODBC DSN name (On a 64 bit computer, you must use the odbcad32.exe in the SysWow64 folder.** Go to “*C:\Windows\SysWOW64*” folder. Double click *odbcad32.exe*.



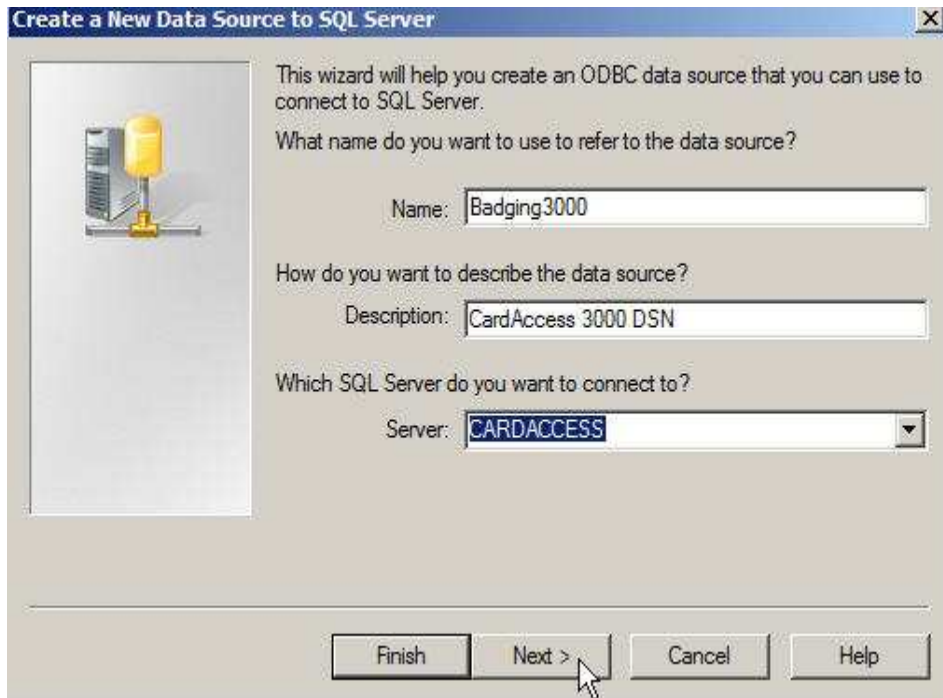
- a. This will bring up the dialog box as shown below. Make sure “*System DSN*” tab is selected and Click the “*Add*” button to create a new DSN name.



- b. In the next screen, make sure "*SQL Server*" driver is selected and click the "*Finish*" button.



c. In the next dialog box, enter the DSN name to be “**Badging3000**” and select SQL Server name where cardAccess3000 software database is installed and click the “*Next*” button.



Create a New Data Source to SQL Server

This wizard will help you create an ODBC data source that you can use to connect to SQL Server.

What name do you want to use to refer to the data source?

Name:

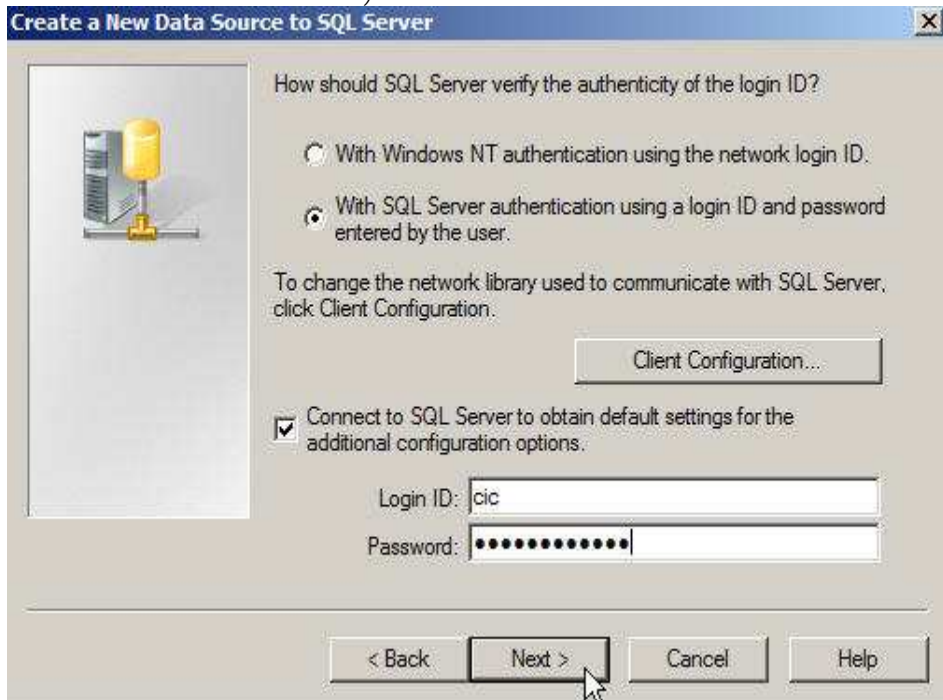
How do you want to describe the data source?

Description:

Which SQL Server do you want to connect to?

Server:

d. In the next screen, make sure “*With SQL Server authentication...*” is selected and enter the Login ID “*cic*” and password “*Cic!23456789*”. (This is the default SqlExpress user name and password in CardAccess 3000 V2.8.2 and V2.9) and Click the “*Next*” button.



Create a New Data Source to SQL Server

How should SQL Server verify the authenticity of the login ID?

☐ With Windows NT authentication using the network login ID.

☒ With SQL Server authentication using a login ID and password entered by the user.

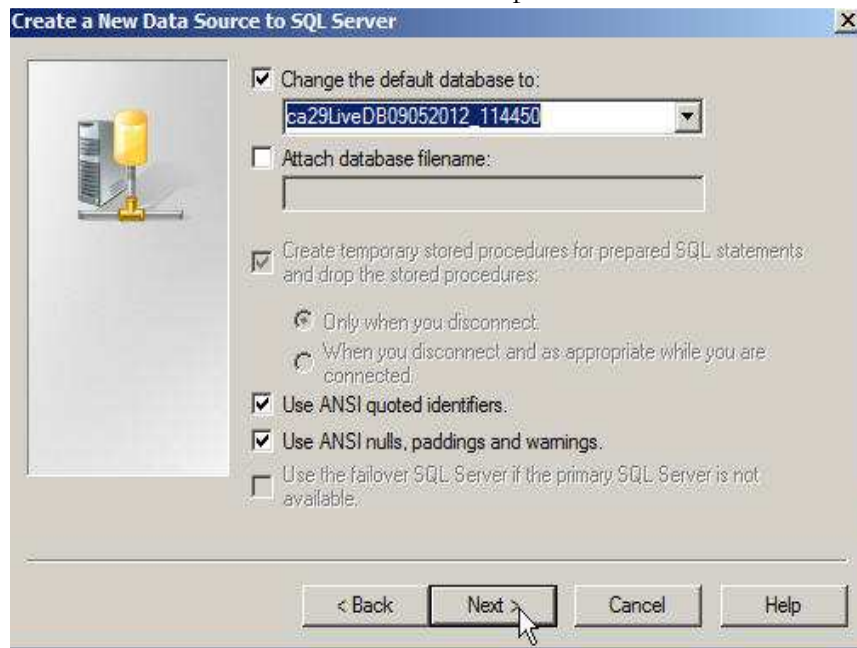
To change the network library used to communicate with SQL Server, click Client Configuration.

☒ Connect to SQL Server to obtain default settings for the additional configuration options.

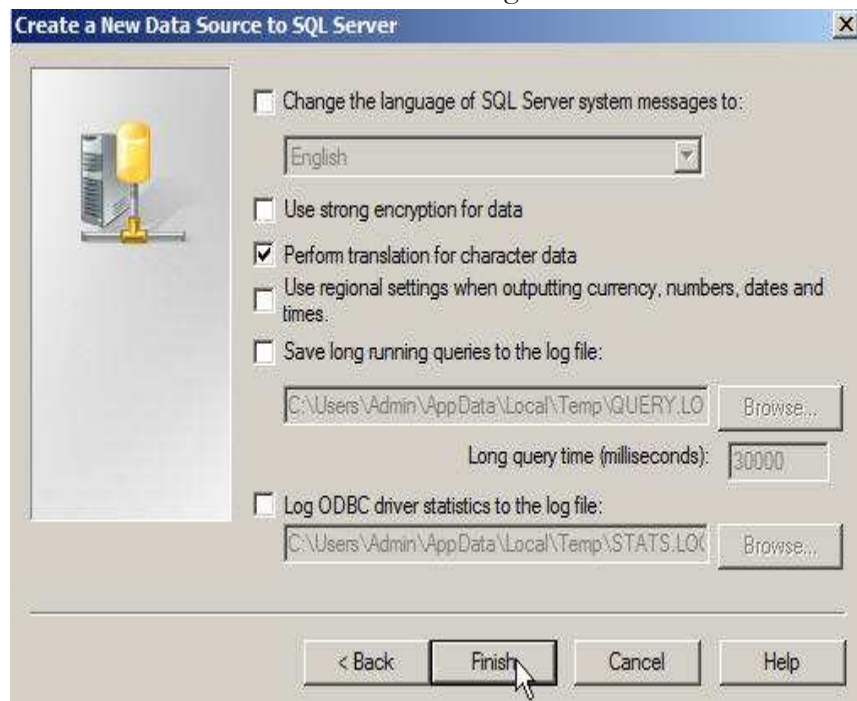
Login ID:

Password:

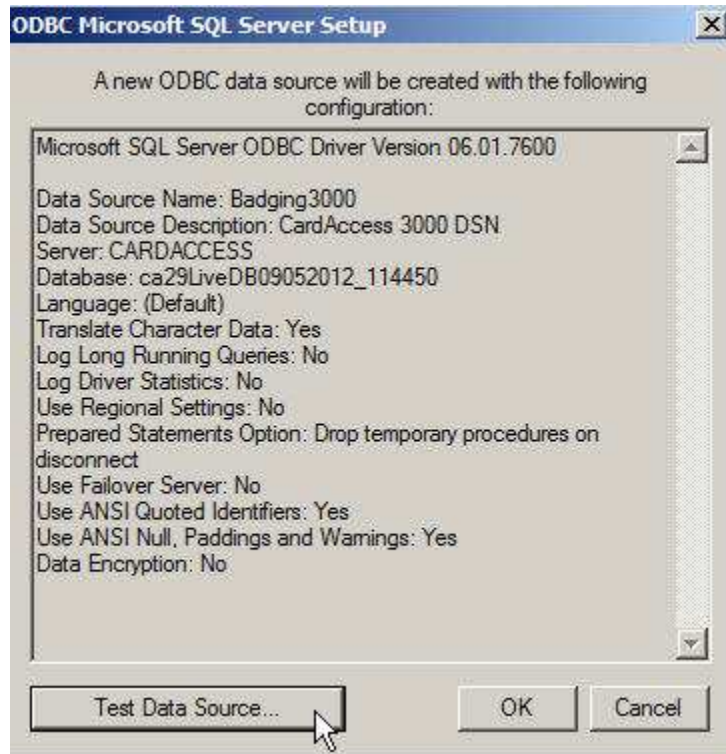
- e. In the next screen, make sure “*Change the default database to*” is checked and select the CardAccess3000 live database from the dropdown list. Leave all other settings unchanged.



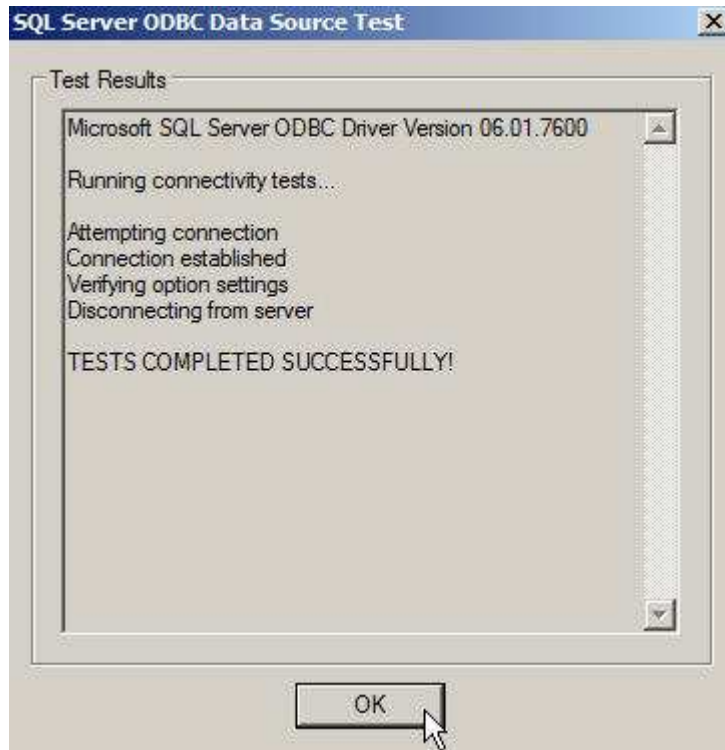
- f. In the Final screen leave all defaults settings and click “*Finish*” button.



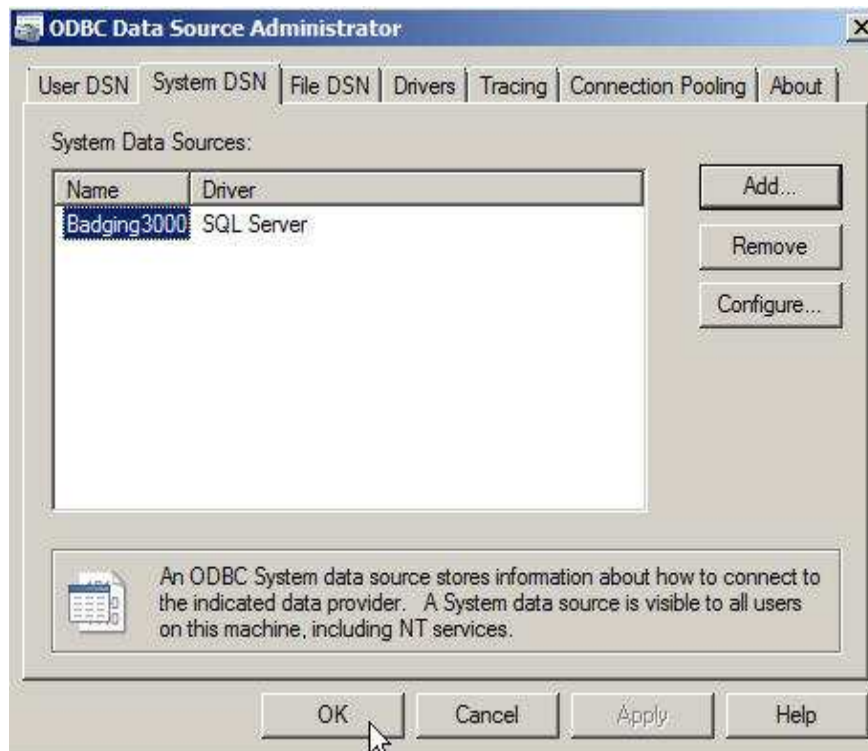
g. The “*Test Data Source*” screen displays. Click “*Test Data Source*” button.



h. Verify the message “*TESTS COMPLETELY SUCCESSFULLY*” displays. If there are any failures, verify all the previous steps are configured properly.



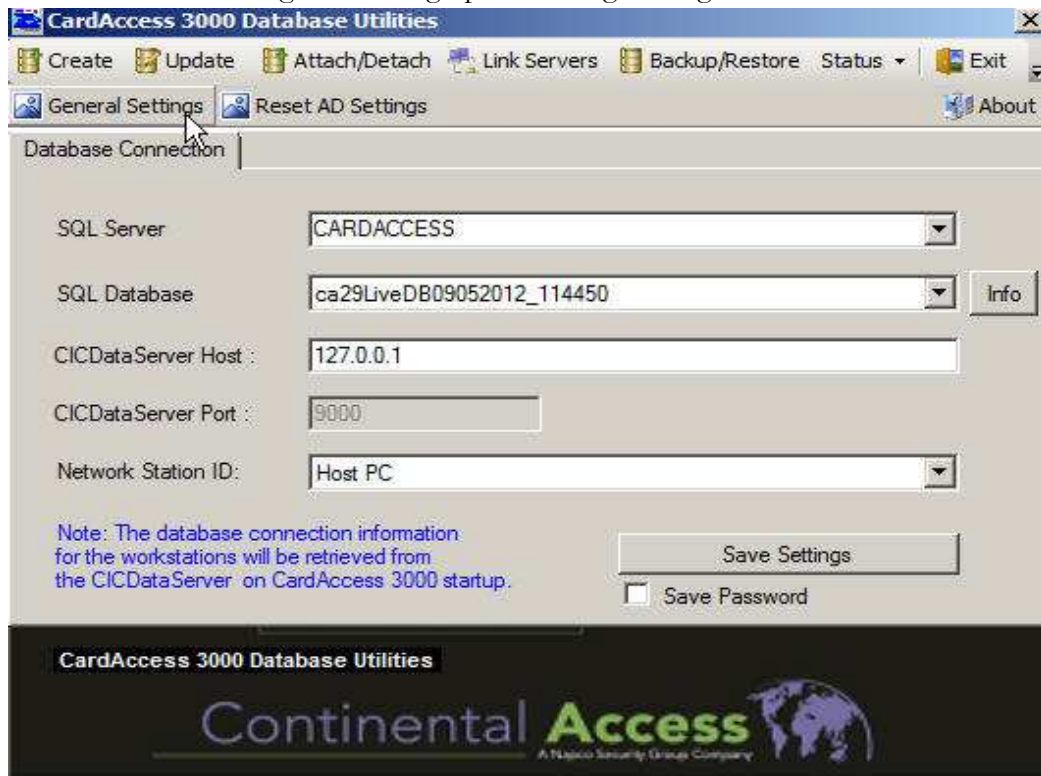
I. Click “OK”. Now the ODBC Data Source window should show a System DSN Name “**Badging3000**” and Driver “**SQL Server**”.



4. **Configure CardAccess3000 software for badging:** CardAccess3000 software should be configured to point to badging ODBC DSN name, EPIBuilder license path and EPIBuilder executable path. CardAccess3000 software automatically will configure EPIBuilder software to points to the same database so that both applications can share the data.
- Make sure CardAccess software is not running and “CIC Data Server” is shut down. (Refer card Access3000 manual for further detail).
 - Go to windows “Start->All Programs->Card Access 3000->Tools” and launch CardAccess Utilities. The password for the CardAccess 3000 Database Utilities is “pr1532”. After typing the password, click “OK”.

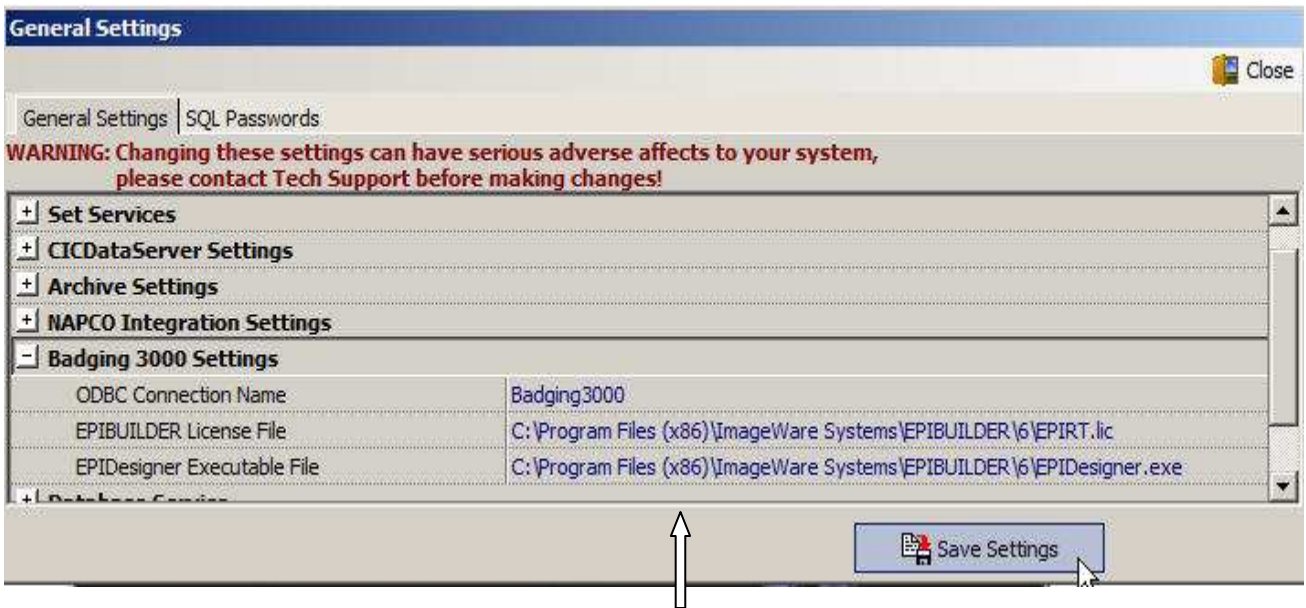


- Click on “General settings” will bring up the settings dialog box.



- In the settings screen, expand “Badging 3000 settings” node and make sure ODBC Connection name is “Badging3000”.

- e. Change the folder path for EPIBUILDER License and Executable files from “C:\Program Files\ImageWare Systems...” to “C:\Program Files (x86)\ImageWare Systems...”. Make sure to include a space before “(x86)”. Click the “Save Settings” and exit all windows.



- f. Launch CardAccess3000 software. Now EPIDesigner functionalities should work on 64 bit windows.

NOTE: If you need further assistance, contact Continental Technical Support at 631-842-9400